



## Playing Card Box



mkoistinen

[VIEW IN BROWSER](#)

updated 12. 4. 2022 | published 25. 11. 2019

### Summary

This is yet another playing card box. It's a simple model, but quite functional.



4.97 hrs



1 pcs



0.15 mm



0.40 mm



PLA



52 g



Prusa  
MK3/S/S+

[Toys & Games](#) > [Other Toys & Games](#)

This is yet another playing card box. It's a simple model, but quite functional. In addition to providing a nice place to store cards, the base makes a great draw pile holder, and the top makes a great discard pile holder.

The spade-shaped hole at the top helps to prevent cards from sticking to the lid due to air pressure, makes a nice finger-hold for pushing cards out, and it's nice to see at a glance which set of cards are inside the box.

This one is sized perfectly for the Bicycle brand of 52 cards (with room to spare for jokers, etc.). The inside dimensions of this box are 64mm x 88.3mm x 20mm (plus an additional 0.3mm tolerance around the width and length). I've exported the design to STEP format and included it below in case you need different dimensions for your brand of playing cards. The

construction is parametric, just update the variables for Width, Length, Height, Tolerance, and Radius to suit your needs.

## Print instructions Category: Games Print Settings

**Printer Brand:** Prusa

**Printer:** i3 MK2S

**Rafts:** No

**Supports:** No

**Resolution:** 0.15mm

**Infill:** 15% Gyroid

**Filament:** Amazon Basics / Overture PLA White

### Notes:

Print the bottom and the top with the flat part against the print bed. It prints easily without supports.

## Model files



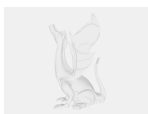
**top.stl**



**playing\_card\_box.3mf**



**bottom.stl**



**playing-card-box-spade-v3.step**

# Print files



## playing\_card\_box\_015mm\_pla\_mk3s\_4h57m.gcode

🌀 PLA 📏 0.40 mm 📐 0.15 mm ⌚ 4.97 hrs ⚖️ 52 g 🖨️ Prusa MK3/S/S+

[Find source .stl files on Thingiverse.com](#)

## License ©

This work is licensed under a  
**Creative Commons (4.0 International License)**



**Attribution-NonCommercial**

- 
- ✗ | Sharing without ATTRIBUTION
  - ✓ | Remix Culture allowed
  - ✗ | Commercial Use
  - ✗ | Free Cultural Works
  - ✗ | Meets Open Definition