



## Knog Plus mount for Early Rider 20"



Nordheim

VIEW IN BROWSER

updated 6. 2. 2022 | published 6. 2. 2022

### Summary

Custom Mount for Knog Plus light on Early Rider 20" bikes.

[Sports & Outdoor](#) > [Outdoor Sports](#)

Tags: bike knog

This is a remix of:

<https://www.thingiverse.com/thing:4608611>

#### Material needed:

Screw M4x16, Nut M4. Magnets Ø6mm. I used 2x 6x3 magnets.

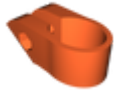
The magnets are press fit.

Printed with Petg.

# Model files



light\_support.stl



clamp.stl

## License

This work is licensed under a  
[Creative Commons \(4.0 International License\)](https://creativecommons.org/licenses/by-nc/4.0/)



**Attribution-NonCommercial**

- 
- ✗ | Sharing without ATTRIBUTION
  - ✓ | Remix Culture allowed
  - ✗ | Commercial Use
  - ✗ | Free Cultural Works
  - ✗ | Meets Open Definition