



Smooth sailfly/ crazybee/toothpick canopee - low angle

[VIEW IN BROWSER](#)

updated 12. 4. 2022 | published 6. 2. 2022

Summary

This is a slight change in the original design, adding the following changes: smoother surface, more "polished" more...

[Hobby & Makers](#) > [Other Ideas](#)

This is a slight change in the original design, adding the following changes:

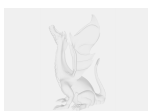
***smoother** surface, more "polished"

- more rare overhangs, leading to a **better print quality**

***lower angle**, to get more vision at lower speeds or with different cameras

Category: Other

Model files



large_display_sailflycanopee_130241.stl

License ©

This work is licensed under a
Creative Commons (4.0 International License)



Attribution-ShareAlike

- ✗ | Sharing without ATTRIBUTION
- ✓ | Remix Culture allowed
- ✓ | Commercial Use
- ✓ | Free Cultural Works
- ✓ | Meets Open Definition