



seal for Sodastream® or other sparkling water maker bottles



AlexMu

[VIEW IN BROWSER](#)

updated 7. 3. 2022 | published 6. 2. 2022

Summary

replacement seal for common water bottles



0.33 hrs



1 pcs



0.20 mm



0.40 mm



Flex



1 g



Prusa
MK3/S/S+

[Household](#) > [Kitchen](#)

Tags: [seal](#) [sealing](#) [soda](#) [sodastream](#)

chamfer on bottom to compensate elephant foot

3 perimeters

line width 0.45

0.2mm layer height

TPU flex material

0.8mm top/bottom tickness

hide seam

no retraction

top pattern: concentric

Model files



sodaseal.3mf

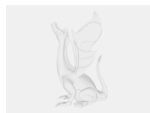
Print files



sodaseal_02mm_flex_mk3s_20m.gcode

Flex 0.40 mm 0.20 mm 0.33 hrs 1 g Prusa MK3/S/S+

Other files



drawing.pdf

License ©

This work is licensed under a
[Creative Commons \(4.0 International License\)](#)

Attribution-NonCommercial



-
- ✗ | Sharing without ATTRIBUTION
 - ✓ | Remix Culture allowed
 - ✗ | Commercial Use

- ✖ | Free Cultural Works
- ✖ | Meets Open Definition