

3D MODEL ONLY



Thai Female statue



Peter Farell

[VIEW IN BROWSER](#)

updated 12. 4. 2022 | published 2. 12. 2019

Summary

THai Female Figure Statue Fixed with Makeprintable and Blender.

[Art & Design](#) > [Sculptures](#)

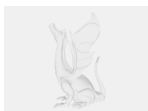
Tags: [statue](#) [female](#) [femalefigure](#) [thai](#) [thailand](#)

THai Female Figure Statue
Fixed with Makeprintable and Blender.

Print instructions

Category: Sculptures

Model files



large_display_thaifemale_stl_13038.stl



thaifemale_stl.stl

[Find source .stl files on Thingiverse.com](#)

License ©

This work is licensed under a
Creative Commons (4.0 International License)



Attribution

- ✗ | Sharing without ATTRIBUTION
- ✓ | Remix Culture allowed
- ✓ | Commercial Use
- ✓ | Free Cultural Works
- ✓ | Meets Open Definition