



## Geisha



**Peter Farell**

[VIEW IN BROWSER](#)

updated 12. 4. 2022 | published 1. 12. 2019

## Summary

Geisha Original Scanned from museum (found on sketchfab) Fixed - Solidified -makeprintable Smoothed Some Sculpting.

[Art & Design](#) > [Sculptures](#)

Tags: [figurine](#) [female](#) [japan](#) [feudal](#) [feudaljapan](#) [geisha](#)

### Geisha

Original Scanned from museum (found on sketchfab)

Fixed - Solidified -makeprintable

Smoothed

Some Sculpting. - blender

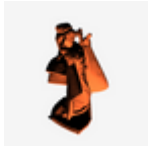
9.28.19 fixed base ... orientation corrected.

sptGeisha.stl has supports included... 2x size

## Print instructions

Category: Scans & Replicas

# Model files



**geisha2.stl**



**sptgeisha.stl**

[Find source .stl files on Thingiverse.com](#)

## License ©

This work is licensed under a  
**Creative Commons (4.0 International License)**



### **Attribution**

- 
- ✗ | Sharing without ATTRIBUTION
  - ✓ | Remix Culture allowed
  - ✓ | Commercial Use
  - ✓ | Free Cultural Works
  - ✓ | Meets Open Definition