



## Cupboard Handle



rembomy

[VIEW IN BROWSER](#)

updated 2. 3. 2022 | published 6. 2. 2022

## Summary

Ours got lost in the shipping when I ordered a new cupboard so made one myself.

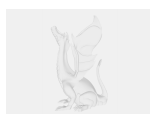
[Household](#) > [Other House Equipment](#)

Tags: [handle](#) [cupboard](#) [cupboardhandle](#)

From center to center of the holes space is 64mm. Should be fairly easy to remix / split the model and increase the spacing if you should need to do that.

Supports are not needed if you print the screw holes upwards, otherwise supports are needed.

## Model files



**cupboard\_hinges.stl**

# License

This work is licensed under a  
**Creative Commons (4.0 International License)**



**Attribution—Noncommercial—Share Alike**

---

- ✗ | Sharing without ATTRIBUTION
- ✓ | Remix Culture allowed
- ✗ | Commercial Use
- ✗ | Free Cultural Works
- ✗ | Meets Open Definition