

## Screw direction reminder for ultrabase leveling

 **matthias\_port**

[VIEW IN BROWSER](#)

updated 12. 4. 2022 | published 6. 2. 2022

### Summary

When leveling the print bed on the Anycubic 4max i always confused the direction to turn screws. So i draw it on a...

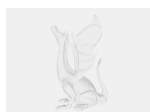
[3D Printers](#) > [Accessories](#)

Tags: [ultrabase](#) [4max](#) [anycubic4max](#)

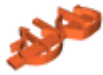
When leveling the print bed on the Anycubic 4max i always confused the direction to turn screws. So i draw it on a post-it and stuck it to the printer. But the post-it fall off and so i redrew it in Tinkercad. Now the "Screw direction reminder" is bolted to the front of the printer.

Category: 3D Printer Accessories

### Model files



**4max\_level\_help.stl**



## 4max\_level\_help\_mount.stl

[Find source .stl files on Thingiverse.com](#)

## License

This work is licensed under a  
**Creative Commons (4.0 International License)**



### Attribution

---

- ✗ | Sharing without ATTRIBUTION
- ✓ | Remix Culture allowed
- ✓ | Commercial Use
- ✓ | Free Cultural Works
- ✓ | Meets Open Definition