



## Dangerous, only for parked car - Car Tray Table for Steering Wheel

E ECohen

VIEW IN BROWSER

updated 13. 1. 2024 | published 13. 1. 2024

### Summary

This two-piece car tray table went through many iterations. The goal: print faster and cheaper than buying off Amazon.



47.52 hrs



2 pcs



0.15 mm  
0.20 mm



0.40 mm



PET



545 g



Prusa  
MK3/S/S+

[Hobby & Makers](#) > [Automotive](#)

Tags: [desktop](#) [food](#) [automotive](#) [mobile](#) [workspace](#)  
[cartray](#)

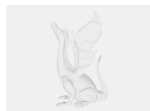
Welcome to my design adventure! My goal was simple: design a car tray for eating/working that attaches to your car steering wheel; the catch: the final product print time should be less than or equivalent to ordering the equivalent tray off of Amazon, and the total cost should be less than or equivalent to the same Amazon product. Here is the link to the product this print is modeled after: [https://www.amazon.com/lebogner-Steering-Notebook-Constant-Travelers/dp/B07MG12QMX/ref=sr\\_1\\_6?keywords=car+tray&qid=1644184828&sr=8-6](https://www.amazon.com/lebogner-Steering-Notebook-Constant-Travelers/dp/B07MG12QMX/ref=sr_1_6?keywords=car+tray&qid=1644184828&sr=8-6)

I've attached a pdf file which documents the journey of design iterations, prototype testing, and all the fun issues that needed conquering. Total time spent on this project was about 30 hours (not including all the print times). Hope you all like it! And if you have suggestions for improvements or want to take the challenge on yourself, be my guest!

By the way, the photos show the tray with special logos and text, which the files I uploaded do not have. If you'd like the version with "The U" logo or my name on the side, I'd be happy to provide it (just figured people would rather have a clean designed tray).

Here is a short video on how to assemble the finished print. <https://youtube.com/shorts/zjPUPFYyIUk?feature=share>

## Model files



**car-tray-competition-v10-4-piece-final-design.sldprt**



**car-tray-competition-v10-4-piece-final-design-pie.stl**



**car-tray-competition-v10-4-piece-final-design-pie.stl**



**car-tray-competition-v10-4-piece-final-design-pie.stl**



**car-tray-competition-v10-4-piece-final-design-pie.stl**

# Print files



## car-tray-competition-v10-4-piece-final-design\_0.gcode

⚙ PET ⚙ 0.40 mm ⚙ 0.15 mm ⌚ 62.40 hrs ⚖ 547 g 🖨 Prusa MK3/S/S+

☐ Longer than the 2 day "limit" but will look better.

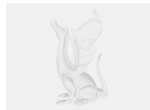


## car-tray-competition-v10-4-piece-final-design\_0.gcode

⚙ PET ⚙ 0.40 mm ⚙ 0.20 mm ⌚ 47.52 hrs ⚖ 545 g 🖨 Prusa MK3/S/S+

☐ Meets requirements for cost (<\$15) and time (<2 days)

# Other files



## car-tray-design-journey.pdf

# License ©



This work is licensed under a  
[Creative Commons \(International License\)](#)

**Public Domain**

- ✓ | Sharing without ATTRIBUTION
- ✓ | Remix Culture allowed
- ✓ | Commercial Use
- ✓ | Free Cultural Works
- ✓ | Meets Open Definition