



Tile Pro (2022) Hidden Bike Seat Rail Mount



Voyager

[VIEW IN BROWSER](#)

updated 15. 6. 2022 | published 7. 2. 2022

Summary

Hidden Tile Pro (2022) seat rail mount for mountain and road bikes.

[Sports & Outdoor](#) > [Outdoor Sports](#)

Tags: [2022](#) [bike](#) [bikemount](#) [mountainbike](#)
[mountainbikemount](#) [rail](#) [road](#) [roadbike](#) [roadbikemount](#)
[seat](#) [seatrails](#) [tile](#) [tilepro](#) [tileprobikemount](#) [tileprocase](#)
[voyager](#)

Hidden Tile Pro (2022) seat rail mount for mountain and road bikes. This mount is designed for ideal detection range due to being as high as possible and away from as much metal that can block bluetooth signal.

My example is printed in nylon, but PETG and ABS should also work well.

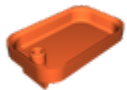
I recommend printing this in either a dark or black filament, or to color match it to your bike so that it doesn't stand out and is as camouflaged as possible.

Use standard M5 bolts and 10-12mm washers as you would for any bike's water bottle cage.

If your seat allows, flip it up above the rails. If not, this design also supports hanging below the seat, but it may be more visible.

Update 2022-5-27: I've added an experimental modified stl file that should be compatible with the Aquara vibration sensor.

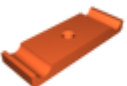
Model files



tilemountbody.stl



tilemountcover.stl



tilemountclamp.stl



experimental-aquara-vibration-sensor.stl

[Find source .stl files on Thingiverse.com](https://www.thingiverse.com/thing/4444444)

License ©

This work is licensed under a
Creative Commons (4.0 International License)



Attribution-ShareAlike

-
- ✗ | Sharing without ATTRIBUTION
 - ✓ | Remix Culture allowed
 - ✓ | Commercial Use

- ✓ | Free Cultural Works
- ✓ | Meets Open Definition