



Mini-Z Trailer/ Jeep Hitch



Aspengt

[VIEW IN BROWSER](#)

updated 12. 4. 2022 | published 7. 2. 2022

Summary

200mm Long trailer designed to work with Mini-Z all length chassis. Basic design with a standard Axle. you will need...

[Hobby & Makers](#) > [Other Ideas](#)

Tags: [hitch](#) [trailer](#) [kyosho](#) [reciever](#) [miniz](#) [kyoshominiz](#)

200mm Long trailer designed to work with Mini-Z all length chassis. Basic design with a standard Axle. you will need to modify to use the wheels you want.

Design is cut in half to allow for easier printing.

Kyosho Jeep 4x4 quick remove hitch assembly. Not sure if it will fit other models. May need some adjustments.

Print Settings

Printer Brand:

Prusa

Printer:

I3 MK3S

Rafts:

Doesn't Matter

Supports:

Yes

Resolution:

.25

Infill:

15%

Filament: Matterhackers Build PLA PLA Black

Category: 3D Printing

Model files



thingiverse_trailer_left.stl



thingiverse_trailer_right.stl



thingiverse_ramp_right.stl



thingiverse_axle.stl



thingiverse_fender_left.stl



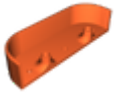
thingiverse_trailer_tounge.stl



jeep_trailer_hook_mount.stl



thingiverse_ramp_left.stl



thingiverse_fender_right.stl



jeep_trailer_hook.stl

[Find source .stl files on Thingiverse.com](#)

License ©



This work is licensed under a
Creative Commons (4.0 International License)

Attribution

- ✗ | Sharing without ATTRIBUTION
- ✓ | Remix Culture allowed
- ✓ | Commercial Use
- ✓ | Free Cultural Works
- ✓ | Meets Open Definition