



Minimalist Lily58 Tenting Case

a al177

[VIEW IN BROWSER](#)

updated 7. 2. 2022 | published 7. 2. 2022

Summary

Yet another tenting case for the Lily58 keyboard, complete with OLED cover

[Gadgets](#) > [Computers](#)

Tags: [keyboard](#) [mechanicalkeyboard](#) [lily58](#) [splitboard](#)

This replaces the bottom case of the Lily58 and Lily58 Pro to give 15 degrees of tenting. Uses the original standoffs and M2x5mm screws to secure the top plate to the case. Stick 5 6mm diameter adhesive rubber feet to the indents in each case to keep the keyboard from skidding.

To install the OLED covers, use two M2x5mm screws into the plastic from the opposite side of the PCB. The cutout in each cover is specific to the alignment of each board half and may not fit correctly if your OLED module is not flush with the back of the Pro Micro board.

Print all parts in your material of choice. All parts should be printed topside down with no supports. For the case I recommend PLA at 40% gyroid infill, 6 top/bottom layers at 0.2mm height, and 4 perimeters for rigidity. OLED covers can be printed at lower density.

Model files



lily58_tent_case_fancy_v20_left.stl

☐ Left case



lily58_tent_case_fancy_v20_right.stl

☐ Right case



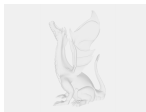
lily58_tent_case_fancy_oled_v13_left.stl

☐ Left OLED cover



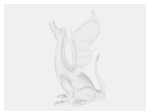
lily58_tent_case_fancy_oled_v13_right.stl

☐ Right OLED cover



lily58-fancy-tenting-base-v20.f3d

☐ Case design in Fusion 360



lily58-fancy-tenting-base-oled-cover-v13.f3d

☐ OLED cover design in Fusion 360

License ©

This work is licensed under a
Creative Commons (4.0 International License)



Attribution-ShareAlike

- ✗ | Sharing without ATTRIBUTION
- ✓ | Remix Culture allowed
- ✓ | Commercial Use
- ✓ | Free Cultural Works
- ✓ | Meets Open Definition

