



## Raspberry Pi Mount for Black Case



McTech3D

[VIEW IN BROWSER](#)

updated 21. 1. 2024 | published 21. 1. 2024

### Summary

Needed to wall mount an older Raspberry Pi 2B that came with this black case. I think some of Rpi 3s came with case as...

[Hobby & Makers](#) > [Other Ideas](#)

Tags: [wall](#) [case](#) [mount](#) [black](#) [wallmount](#) [raspberrypi](#)  
[rpi](#) [rasberry](#) [network](#) [thingiverse](#) [raspberrypi3](#)

Needed to wall mount an older Raspberry Pi 2B that came with this black case.

I think some of Rpi 3s came with case as well.

Has two channels built in where a zip tie can feed through and secure the Case to the mounting plate.

x2 Holes are sized for #6 Machine Screws

The arrow points to where the SD card slot should be when attaching the case to this mount.

Need to use good zip ties. The channels are tight, so cheaper zip ties may not fit

EDIT - Added a stubby version too. Just a smaller version that would probably print x2 faster.

## Print Settings

### Printer Brand:

Prusa

### Printer:

I3 MK3S

### Rafts:

No

### Supports:

No

### Resolution:

.2

### Infill:

15%

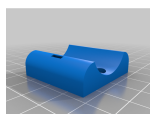
**Filament:** PLA PLA

### Notes:

Put cuts in the bottom of this model just to make it get done with first layer faster. I print my first layer @ 1/2 to 3/4 times the normal speed usually.

The arrow points to where the SD card slot should be when attaching the case to this mount. Category: DIY

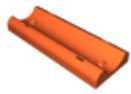
## This remix is based on



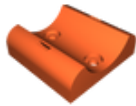
**Raspberry Pi Mount for Black Case**

by shaun6mc

# Model files



**rpi\_black\_case\_mountv1.stl**



**rpi\_black\_case\_mountv1\_stubby.stl**

[Find source .stl files on Thingiverse.com](#)

## License ©

This work is licensed under a  
**Creative Commons (4.0 International License)**



### Attribution

- 
- ✗ | Sharing without ATTRIBUTION
  - ✓ | Remix Culture allowed
  - ✓ | Commercial Use
  - ✓ | Free Cultural Works
  - ✓ | Meets Open Definition