

Puzzle #5 Heart puzzle, secret gift box



djedje_zr7

VIEW IN BROWSER

updated 10. 2. 2022 | published 7. 2. 2022

Summary

Heart puzzle, secret gift box. With 0 to 4 secret boxes



14.83 hrs



13 pcs



0.30 mm



0.40 mm



PLA



309 g



Prusa
MK3/S/S+

[Art & Design](#) > [Other Art & Designs](#)

Tags: [box](#) [secret](#) [valentine](#) [brainteaser](#) [puzzles](#)

Secret box size : 40x20x30 (L x W x H)

Until 02/14/2022 contact me to personalize it with your text on the front front face

For Better render :

Print it with prusament Red lipstick (<https://www.prusa3d.com/product/prusament-pla-lipstick-red-1kg/>) and Front and Rear parts on powder-coated steel sheet (<https://www.prusa3d.com/product/double-sided-textured-pei-powder-coated-spring-steel-sheet/>)

Model files



Front_Rear With secret box

4 files



front_left_secretbox.3mf



front_right_secretbox.3mf



rear_left_secretbox.3mf



rear_right_secretbox.3mf



Secret Box

1 file



secretbox.3mf

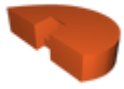


Front_Rear No secret box

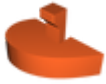
4 files



front_left_nosecretbox.3mf



front_right_nosecretbox.3mf



rear_left_nosecretbox.3mf



rear_right_nosecretbox.3mf



center_parts.3mf



middle_parts.3mf



lock.3mf



base_support.3mf

Print files



Front_Rear With secret box

4 files



front_left_secretbox_03mm_pla_mk3s_1h48m.gcode

PLA 0.40 mm 0.30 mm 1.80 hrs 40 g Prusa MK3/S/S+



front_right_secretbox_03mm_pla_mk3s_1h48m.gcode

PLA 0.40 mm 0.30 mm 1.81 hrs 40 g Prusa MK3/S/S+



rear_left_secretbox_03mm_pla_mk3s_2h14m.gcode

PLA 0.40 mm 0.30 mm 2.24 hrs 43 g Prusa MK3/S/S+



rear_right_secretbox_03mm_pla_mk3s_2h13m.gcode

PLA 0.40 mm 0.30 mm 2.22 hrs 43 g Prusa MK3/S/S+



Secret Box

1 file



secretbox_03mm_pla_mk3s_40m.gcode

PLA 0.40 mm 0.30 mm 0.66 hrs 13 g Prusa MK3/S/S+



Front_Rear No secret box

4 files



front_left_nosecretbox_03mm_pla_mk3s_1h28m.gcode

PLA 0.40 mm 0.30 mm 1.47 hrs 34 g Prusa MK3/S/S+



front_right_nosecretbox_03mm_pla_mk3s_1h28m.gcode

PLA 0.40 mm 0.30 mm 1.46 hrs 34 g Prusa MK3/S/S+



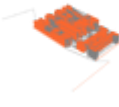
rear_left_nosecretbox_03mm_pla_mk3s_1h53m.gcode

⚙️ PLA ⚙️ 0.40 mm ⚙️ 0.30 mm ⌚ 1.88 hrs ⚖️ 37 g 🖨️ Prusa MK3/S/S+



rear_right_nosecretbox_03mm_pla_mk3s_1h53m.gcode

⚙️ PLA ⚙️ 0.40 mm ⚙️ 0.30 mm ⌚ 1.89 hrs ⚖️ 37 g 🖨️ Prusa MK3/S/S+



center_parts_03mm_pla_mk3s_3h28m.gcode

⚙️ PLA ⚙️ 0.40 mm ⚙️ 0.30 mm ⌚ 3.46 hrs ⚖️ 72 g 🖨️ Prusa MK3/S/S+



middle_parts_03mm_pla_mk3s_3h7m.gcode

⚙️ PLA ⚙️ 0.40 mm ⚙️ 0.30 mm ⌚ 3.12 hrs ⚖️ 66 g 🖨️ Prusa MK3/S/S+



lock_03mm_pla_mk3s_13m.gcode

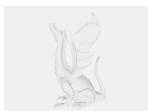
⚙️ PLA ⚙️ 0.40 mm ⚙️ 0.30 mm ⌚ 0.22 hrs ⚖️ 4 g 🖨️ Prusa MK3/S/S+



base_support_03mm_pla_mk3s_40m.gcode

⚙️ PLA ⚙️ 0.40 mm ⚙️ 0.30 mm ⌚ 0.67 hrs ⚖️ 12 g 🖨️ Prusa MK3/S/S+

Other files



instruction.pdf

License

This work is licensed under a
Creative Commons (4.0 International License)



Attribution—Noncommercial—Share Alike

- ✗ | Sharing without ATTRIBUTION
- ✓ | Remix Culture allowed
- ✗ | Commercial Use
- ✗ | Free Cultural Works
- ✗ | Meets Open Definition