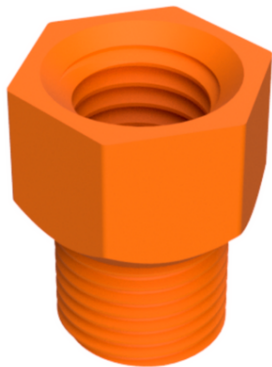


3D MODEL ONLY



Prusa PTFE Fitting to PC4-M10 interface adapter

 Angelo

[VIEW IN BROWSER](#)

updated 7. 2. 2022 | published 7. 2. 2022

Summary

A quick and useful adapter to connect the original prusa PTFE fitting to a 3rd part Mini Heatsink replacement.

[3D Printers](#) > [Accessories](#)

Tags: [adapter](#) [ptfe](#) [tube](#) [pc4m10](#) [interface](#) [fitting](#)

A quick and useful adapter to connect the original prusa PTFE fitting to a 3rd part Mini Heatsink replacement.

Print settings:

- 0.1 DETAIL resolution
- 100% infill
- Material: PLA, PETG - (printed mine with good PLA)

Model files



prusa_ptfe-fitting_to_pc4-m10.3mf

☐ Print it at 0.1 resolution and 100% infill

License

This work is licensed under a
Creative Commons (4.0 International License)



Attribution

- ✗ | Sharing without ATTRIBUTION
- ✓ | Remix Culture allowed
- ✓ | Commercial Use
- ✓ | Free Cultural Works
- ✓ | Meets Open Definition