

## Sash Clamps Midium Size



jcjames\_13009

VIEW IN BROWSER

updated 23. 8. 2022 | published 23. 8. 2022

### Summary

I designed and 3D printed parts to build sash clamps for wood panel assembly



18.93 hrs



5 pcs



0.20 mm



0.40 mm



PLA



215 g



Prusa MINI /  
MINI+

[Hobby & Makers](#) > [Tools](#)

Tags: [clamp](#) [sashclamp](#) [wood](#) [woodworking](#) [serrejoint](#)  
[dormant](#)

Starting from the excellent design published here → <https://www.prusaprinters.org/prints/63996-serre-joint-dormant>, I designed my own with Fusion 360 adapted to wood size 30mm x 20mm and 8mm threaded shaft

After 1st print and test I made some changes/improvements on the design. Mainly for the handle and the mobile head. So now the head stays aligned with the wood and handle handle no longer unscrews when loosening

Printed in PLA YellowGreen from Filament PM and PLA Prusament Galaxy Black (For the handle) on my PRUSA MINI+, I used similar parameters as original parts → 7 perimeters / 7 solid layers / Honeycomb infill and 25% density

For assembly you'll need:

- 1 x 8mm threaded shaft / Long 100mm or more
- 4 x M8 nuts
- 2 x M8 washers
- 2 x M6x45 screws
- 2 x M6 nuts
- 5 x M6 washers
- Piece of wood 20mmx30mm / Long as you need

On top of .stl and .3mf files I uploaded Fusion 360 .f3d one so you can modify the design and adapt it to your needs

As usual, feedback and comments (and for sure "likes") will be always welcome. Feel free to post nice pictures of your makes

Enjoy

If you like this model, take a look also at [my other designs](#)

## This remix is based on



**Serre-joint dormant**

by adesir

## Model files



**serre-joint-dormant-jc-moyen-appuie-fixe.stl**



**serre-joint-dormant-jc-moyen-appuie-mobile.stl**



**serre-joint-dormant-jc-moyen-fermeture-v2.stl**

---



**serre-joint-dormant-jc-moyen-tete-mobile-v2.stl**

---



**serre-joint-dormant-jc-moyen-poignee.stl**

---



**serre-joint-dormant-jc-moyen-appuie-fixe.3mf**

---



**serre-joint-dormant-jc-moyen-appuie-mobile.3mf**

---



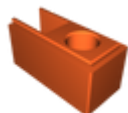
**serre-joint-dormant-jc-moyen-fermeture-v2.3mf**

---



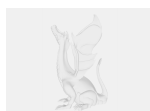
**serre-joint-dormant-jc-moyen-poignee.3mf**

---



**serre-joint-dormant-jc-moyen-tete-mobile-v2.3mf**

---



**serre-joint-dormant-moyen-v24.f3d**

# Print files



## serre-joint-dormant-jc-moyen-fermeture-v2\_02mm\_.gcode

🌀 PLA 📏 0.40 mm 📐 0.20 mm ⌚ 0.54 hrs ⚖️ 6 g 🖨️ Prusa MINI / MINI+



## serre-joint-dormant-jc-moyen-poignee\_02mm\_7p\_pl.gcode

🌀 PLA 📏 0.40 mm 📐 0.20 mm ⌚ 2.45 hrs ⚖️ 25 g 🖨️ Prusa MINI / MINI+



## serre-joint-dormant-jc-moyen-tete-mobile-v2\_02m.gcode

🌀 PLA 📏 0.40 mm 📐 0.20 mm ⌚ 4.16 hrs ⚖️ 48 g 🖨️ Prusa MINI / MINI+



## serre-joint-dormant-jc-moyen-appuie-fixe\_02mm\_7.gcode

🌀 PLA 📏 0.40 mm 📐 0.20 mm ⌚ 5.76 hrs ⚖️ 67 g 🖨️ Prusa MINI / MINI+



## serre-joint-dormant-jc-moyen-appuie-mobile\_02mm.gcode

🌀 PLA 📏 0.40 mm 📐 0.20 mm ⌚ 6.02 hrs ⚖️ 69 g 🖨️ Prusa MINI / MINI+

# License ©

This work is licensed under a  
[Creative Commons \(4.0 International License\)](#)



**Attribution—Noncommercial—Share Alike**

- ✗ | Sharing without ATTRIBUTION
- ✓ | Remix Culture allowed
- ✗ | Commercial Use
- ✗ | Free Cultural Works
- ✗ | Meets Open Definition

