



Raspberry Pi Zero (W) case & wall mount

S SteevieB

[VIEW IN BROWSER](#)

updated 7. 2. 2022 | published 7. 2. 2022

Summary

Case for Raspberry Pi Zero and Zero W including a snap-in wall mount



2.01 hrs



1 pcs



0.15 mm



0.40 mm



PLA



13 g



Prusa
MK3/S/S+

[Gadgets](#) > [Computers](#)

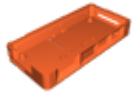
Tags: [case](#) [raspberry](#) [raspberrypicase](#) [raspberrypizero](#)
[rasberrypihousing](#)

This housing is designed for Raspberry Pi Zero (W). No glue or screws necessary. The lid snaps into the case. The case can easily be slid into or removed from the wall mount for easy access.

HDMI / USB ports, camera connector as well as SD card are accessible. The lid can carry an additional SD card inside the housing as “backup” for fast replacement. “just in case off”

I don't know if the housing fits with the new Pi Zero 2, but I would guess so.

Model files



raspizero_case_v312.stl



raspizero_case_lid_v312.stl



raspizero_case_mount_v312.stl

Print files



raspizero_case_lid_v312_015mm_pla_mk3s_2h1m.gcode

🌀 PLA 🌀 0.40 mm ≡ 0.15 mm ⌚ 2.01 hrs ⚖️ 13 g 🖨️ Prusa MK3/S/S+

📄 GCode prints one part after the other

License ©

This work is licensed under a
[Creative Commons \(4.0 International License\)](https://creativecommons.org/licenses/by-nc/4.0/)



Attribution-NonCommercial

- ✗ | Sharing without ATTRIBUTION
- ✓ | Remix Culture allowed
- ✗ | Commercial Use
- ✗ | Free Cultural Works
- ✗ | Meets Open Definition

