

## Inductive Sensor Mounts with adjustable end position



Marcus

[VIEW IN BROWSER](#)

updated 7. 2. 2022 | published 7. 2. 2022

### Summary

Inductive Sensor Mounts with adjustable end position for 8,5mm sensor, i use this for PrintNC

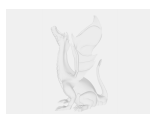
[Hobby & Makers](#) > [Electronics](#)

Tags: [mounts](#) [inductivesensor](#) [printnc](#)

I print this in petg, the hole is for M4 hex socket

45x20x8mm

### Model files



limit\_sensor\_v4.f3d



limit\_sensor\_v4.stl

## License ©

This work is licensed under a  
GNU



General Public License v2.0

---

- ✗ | Sharing without ATTRIBUTION
- ✓ | Remix Culture allowed
- ✓ | Commercial Use
- ✓ | Meets Open Definition
- i | Share under the same license