



Buddy Jesus



Peter Farell

[VIEW IN BROWSER](#)

updated 12. 4. 2022 | published 4. 5. 2021

Summary

A remake of Buddy Jesus from the Movie Dogma.

[World & Scans](#) > [People](#)

Tags: [statue](#) [jesus](#) [dogma](#) [humor](#)

A remake of Buddy Jesus from the Movie Dogma. Once I learn how to design clothing better in Blender I will add the proper robe. Until then... This would look good on any dashboard.

Print instructions Category: Sculptures Print Settings

Printer Brand: Prusa

Printer: Prusa Clone

Rafts: No

Supports: Yes

Resolution: .15

Infill: 8 percent

Notes:

I am testing how this prints with supports everywhere at 8 percent with a roof.

How I Designed This

Makehuman Blender Tinkercad

Make Human for basic figurative form + facial features.

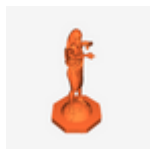
Blender For posing

Tinkercad for Base

and

MakePrintable to repair all the non-manifold and vertex issues that arise whenever I model from Makehuman and Blender.

Model files



buddyjesus.stl



buddyjesuswithsupport.stl

[Find source .stl files on Thingiverse.com](https://www.thingiverse.com/thing/4588888)

License ©

This work is licensed under a

Creative Commons (4.0 International License)



Attribution

-
- ✗ | Sharing without ATTRIBUTION
 - ✓ | Remix Culture allowed
 - ✓ | Commercial Use
 - ✓ | Free Cultural Works
 - ✓ | Meets Open Definition

