



Tea candle holder



Beaver

[VIEW IN BROWSER](#)

updated 26. 9. 2022 | published 26. 9. 2022

Summary

A holder for a tea candle

[Household](#) > [Other House Equipment](#)

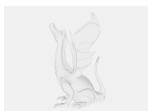
A holder for a tea candle, meant for use with this vase: <https://www.thingiverse.com/thing:31722>

Print the base in clear filament for best results.

Model files



tea_candle_holder.stl



tea_candle_holder.fcstd

[Find source .stl files on Thingiverse.com](#)

License

This work is licensed under a
Creative Commons (4.0 International License)



Attribution-ShareAlike

- ✗ | Sharing without ATTRIBUTION
- ✓ | Remix Culture allowed
- ✓ | Commercial Use
- ✓ | Free Cultural Works
- ✓ | Meets Open Definition