

## Footpads for metal shelves on rugs



Beaver

[VIEW IN BROWSER](#)

updated 26. 9. 2022 | published 26. 9. 2022

### Summary

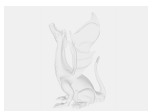
Footpads for metal shelves, specifically for use on rugs. Front footpads are taller, which counteracts the tipping...

[Household](#) > [Office](#)

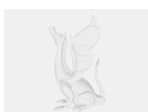
Tags: [shelfsupport](#)

Footpads for metal shelves, specifically for use on rugs. Front footpads are taller, which counteracts the tipping that happens.

### Model files



**footpad\_back\_v2.f3d**



**footpad\_front\_v3.step**



**footpad\_front\_v3.f3d**

---



**footpad\_back\_v2.step**

---



**footpad\_front\_v3.stl**

---



**footpad\_back\_v2.stl**

[Find source .stl files on Thingiverse.com](#)

## License ©

This work is licensed under a  
**Creative Commons (4.0 International License)**



**Attribution-ShareAlike**

---

- ✗ | Sharing without ATTRIBUTION
- ✓ | Remix Culture allowed
- ✓ | Commercial Use
- ✓ | Free Cultural Works
- ✓ | Meets Open Definition