

Clip for 1515 extrusion



ibash

[VIEW IN BROWSER](#)

updated 7. 2. 2022 | published 7. 2. 2022

Summary

This is a simple clip for OpenBeam 1515. This comes from Winne on thingiverse.

[3D Printers](#) > [Accessories](#)

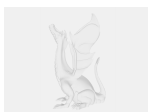
Tags: [clip](#) [1515](#) [openbeam1515](#) [1515extrusion](#) [kossel1515](#)

Not my design, this comes from Winne on thingiverse: <https://www.thingiverse.com/thing:783810>

Model files



clip.stl



clip.scad

[Find source .stl files on Thingiverse.com](#)

License

This work is licensed under a
Creative Commons (4.0 International License)



Attribution-ShareAlike

- ✗ | Sharing without ATTRIBUTION
- ✓ | Remix Culture allowed
- ✓ | Commercial Use
- ✓ | Free Cultural Works
- ✓ | Meets Open Definition