



knob for the kettle



Dr_Eamy

[VIEW IN BROWSER](#)

updated 12. 4. 2022 | published 7. 2. 2022

Summary

Part1.stl is without nut Partv2.stl is whit nut insert and the one i'm using on the kettle <https://youtu.be/WBpTH8lohkg>



0.18 hrs



1 pcs



0.15 mm



0.40 mm



PET



1 g



Prusa
MK3/S/S+

[Household](#) > [Kitchen](#)

Tags: **knob**

Part1.stl is without space for m6 nut

Partv2.stl is whit space for a m6 nut to be inserted and covered by the part2 and the one i'm using on the kettle

Post-Printing

press fit press fit M6 nut then plug

Category: Kitchen & Dining

Model files



plug.stl



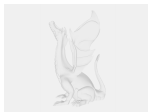
part1.stl



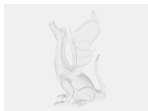
partv2.stl



part2.stl



part1.ipt



part2.ipt

Print files



propp-pet-part2.gcode

🌀 PET 🌀 0.40 mm ≡ 0.15 mm 🕒 0.18 hrs 📊 1 g

[Find source .stl files on Thingiverse.com](#)

License ©

This work is licensed under a
Creative Commons (4.0 International License)



Attribution

- ✗ | Sharing without ATTRIBUTION
- ✓ | Remix Culture allowed
- ✓ | Commercial Use
- ✓ | Free Cultural Works
- ✓ | Meets Open Definition