

another inductive sensor mounts with adjustable en position



Marcus

[VIEW IN BROWSER](#)

updated 14. 2. 2022 | published 7. 2. 2022

Summary

mount hole is different for smal spaces

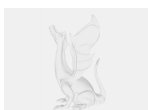
[Hobby & Makers](#) > [Electronics](#)

This remix is based on

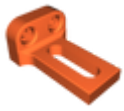


Inductive Sensor Mounts with adjustable end position
by Marcus

Model files



limit_sensor_v5-v2.f3d



limit_switch_v5.stl

License ©

This work is licensed under a
GNU



General Public License v2.0

- ✗ | Sharing without ATTRIBUTION
- ✓ | Remix Culture allowed
- ✓ | Commercial Use
- ✓ | Meets Open Definition
- i | Share under the same license