



## Web Cam Cover



Alex Ardeleanu

[VIEW IN BROWSER](#)

updated 7. 2. 2022 | published 7. 2. 2022

### Summary

- designed for the Microsoft Surface Pro (2017)



0.56 hrs



1 pcs



0.20 mm



0.40 mm



PLA



6 g



Prusa MINI /  
MINI+

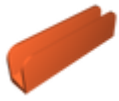
[Gadgets](#) > [Computers](#)

Tags: [camera](#) [cover](#) [webcam](#) [webcamcover](#) [surfacepro](#)  
[microsoftsurfacepro](#) [nolookie](#)

This is a simple webcam cover that covers both the front-facing and rear camera of a Microsoft Surface Pro 2017.

It also covers the microphone, which may be a bug or a feature.

## Model files



web\_cam\_cover\_v2.stl

## Print files



web\_cam\_cover\_v2\_02mm\_pla\_mini\_34m.gcode

🌀 PLA 🌀 0.40 mm 🌀 0.20 mm 🕒 0.56 hrs 📊 6 g 🖨️ Prusa MINI / MINI+

## License ©

This work is licensed under a  
**GNU**



**General Public License v2.0**

- 
- ✖ | Sharing without ATTRIBUTION
  - ✓ | Remix Culture allowed
  - ✓ | Commercial Use
  - ✓ | Meets Open Definition
  - i | Share under the same license