



## Hook roof hatch



AHA

[VIEW IN BROWSER](#)

updated 15. 3. 2022 | published 7. 2. 2022

### Summary

New hook for the opening of the roof hatch.



1.97 hrs



1 pcs



0.20 mm



0.40 mm



PLA



13 g



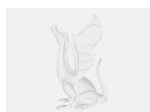
Prusa  
MK3/S/S+

[Hobby & Makers](#) > [Mechanical Parts](#)

Tags: [hook](#) [hatch](#) [roof](#)

I have printed this hook only with PLA. This material is normally strong enough. You also can print this with PETG.

### Model files



**haken-dachluke.fcstd**

# Print files



## haken\_dachluke\_02mm\_pla\_mk3s\_1h58m.gcode

PLA 0.40 mm 0.20 mm 1.97 hrs 13 g Prusa MK3/S/S+

## License



This work is licensed under a  
[Creative Commons \(4.0 International License\)](#)

**Attribution-NonCommercial**

- 
- ✗ | Sharing without ATTRIBUTION
  - ✓ | Remix Culture allowed
  - ✗ | Commercial Use
  - ✗ | Free Cultural Works
  - ✗ | Meets Open Definition