

Universal Banana Scale CM on one side, Inches on the other



mscalora

[VIEW IN BROWSER](#)

updated 3. 4. 2023 | published 3. 4. 2023

Summary

Traditional Banana Scale with metric (cm) on one side and SAE (1/2 in) on the other



2.88 hrs



1 pcs



0.20 mm



0.40 mm



PLA



21 g



Prusa
MK3/S/S+

[Gadgets](#) > [Other Gadgets](#)

Tags: [measure](#) [scale](#) [ruler](#) [banana](#) [rulerincm](#) [rulerinches](#) [bananaforscale](#)

Universal Banana Scale - centimeter marks on one side and half inch on the other. International unity at last.

Included G-Code allows for manual filament (color) change using M600 G-Code.

CAD files included, Fusion 360 file is parameterized. If you load the 3mf in Prusa Slicer answer "no" for the "object is too small" dialog, then answer

“yes” for the “Multi-part object detected” to keep the parts in alignment. To use the faux multi-extruder print method, set **Body1** to yellow and all the other parts to black.

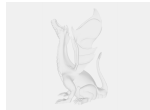
NOTE: Updated to v7 to fix stem issue

RE: <https://knowyourmeme.com/memes/banana-for-scale>

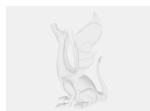
Model files



universal-banana-scale-v7.3mf



universal-banana-scale-v7.f3d



universal-banana-scale-v7.step

Print files



universal-banana-scale-v7-fme.gcode

🌀 PLA 🌀 0.40 mm ≡ 0.20 mm ⌚ 2.88 hrs ⚖️ 21 g 🖨️ Prusa MK3/S/S+

License ©

This work is licensed under a
[Creative Commons \(4.0 International License\)](https://creativecommons.org/licenses/by/4.0/)



Attribution

- ✖ | Sharing without ATTRIBUTION
- ✔ | Remix Culture allowed
- ✔ | Commercial Use
- ✔ | Free Cultural Works
- ✔ | Meets Open Definition