



The "horny heart" emoji valentine badge



stevenmarx

[VIEW IN BROWSER](#)

updated 24. 10. 2023 | published 24. 10. 2023

Summary

I turn my favorite emoji designs into cute 3d color print badges. Stay tuned!



1.62 hrs



3 pcs



0.20 mm



0.40 mm



PLA



24 g



Prusa MINI /
MINI+

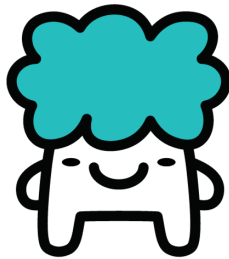
[Art & Design](#) > [2D Plates & Logos](#)

Tags: [design](#) [cute](#) [magnet](#) [heart](#) [valentine](#)
[valentinesdaygifts](#) [heartvalentinesday](#) [emoji](#) [valentines](#)
[girlfriend](#) [kissemoji](#) [horny](#) [heartbadge](#)

The emojis contain several parts and have to be put together. Rarely you need a drop glue, often the parts hold together by themselves.

Some parts are multicolored. With the color change feature in Prusa Slicer, you can print with multiple colors even without MMU (MULTI MATERIAL UPGRADE). How I do this, I show you in this [How-to-Video](#).

Happy Printing!



Mehr erfahren? Auf meinem Blog [Tüfteltipps.de](https://www.tuefteltipps.de) teile ich als Medienpädagoge spannende DIY-Projekte und praktische MINT-Tipps. Schaut vorbei und entdeckt neue Ideen auf <https://www.tuefteltipps.de>

Learn more? On my blog [Tüfteltipps.de](https://www.tuefteltipps.de), I share exciting DIY projects and practical STEM tips as a media educator. Check it out and discover new ideas at <https://www.tuefteltipps.de>

This remix is based on



Heart, love, sexy icon - Free download on [Iconfinder](#)

Model files



heart-emoji-slobber.stl



heart-emoji-cover.stl



heart-emoji-ground-two-color.stl

Print files



heart-emoji-slobber_02mm_pla_mini_2m.gcode

🌀 PLA 📏 0.40 mm 📏 0.20 mm ⌚ 0.03 hrs ⚖️ 1 g 🖨️ Prusa MINI / MINI+



heart-emoji-ground-two-color_02mm_pla_mini_38m.gcode

🌀 PLA 📏 0.40 mm 📏 0.20 mm ⌚ 0.63 hrs ⚖️ 10 g 🖨️ Prusa MINI / MINI+



heart-emoji-cover_02mm_pla_mini_57m.gcode

🌀 PLA 📏 0.40 mm 📏 0.20 mm ⌚ 0.96 hrs ⚖️ 13 g 🖨️ Prusa MINI / MINI+

[Find source .stl files on Thingiverse.com](#)

License ©

This work is licensed under a
Creative Commons (4.0 International License)



Attribution—Noncommercial—Share Alike

- ✗ | Sharing without ATTRIBUTION
- ✓ | Remix Culture allowed
- ✗ | Commercial Use
- ✗ | Free Cultural Works
- ✗ | Meets Open Definition