



MMU Loader



Phil

[VIEW IN BROWSER](#)

updated 21. 3. 2022 | published 8. 2. 2022

Summary

This helps me load my MMU by creating a gap between the PTFE tubes where I can access the filament easily.

[3D Printers](#) > [Accessories](#)

Tags: [mmu](#) [mmu2s](#) [mmu2](#) [ptfe](#)

I wanted to have easy access to push or pull the filament in/out of the MMU. I created this loader that mounts nicely to the back of the Ikea Lack table. I have my spools on the lower table and the printer on the upper one. The PTFE tubes at the top go to the MMU, and the lower ones go to my spools.

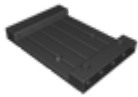
This makes it so much easier to load filament into the MMU. When there's a loading error, it's pretty easy to press the "retry" button and feed in a bit more filament while it's trying to load.

I printed at 0.2mm in PLA

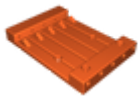
UPDATE: I made an improved version which works even better when you have your spools below the printer like I do. Sometimes the filament that's not being used would pull out of the MMU due to gravity pulling it down. The improved version adds little friction blocks that are doing a great job of giving just enough friction so that the filament doesn't fall back out of the MMU when the spools are below the printer. This version is called

MMU-Loader-Friction-Version.3mf in the files. The one printed in green in the photos is the version with the friction blocks.

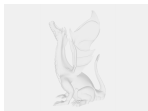
Model files



mmu-loader.3mf



mmu-loader-friction-version.3mf



mmu-loader.f3d

License ©

This work is licensed under a
[Creative Commons \(4.0 International License\)](#)



Attribution—Noncommercial—Share Alike

- ✗ | Sharing without ATTRIBUTION
- ✓ | Remix Culture allowed
- ✗ | Commercial Use
- ✗ | Free Cultural Works
- ✗ | Meets Open Definition