



## Box for a drawing knife NAREX



igtbeetle

[VIEW IN BROWSER](#)

updated 8. 2. 2022 | published 8. 2. 2022

### Summary

A simple box for a drawing knife made by NAREX



7.55 hrs



1 pcs



0.15 mm



0.40 mm



PET



80 g



Prusa  
MK3/S/S+

[Hobby & Makers](#) > [Tools](#)

Tags: [woodworking](#) [narex](#) [drawingknife](#)

A simple model of a box for a woodworking drawing knife. The problem is to maintain sharpness of the knife in a woodworking shop. This is the reason why I designed a simple box with a title. The title is in Czech but can be easily modified to another language. Used font is ARIAL BLACK. The title is printed as "bicolor" and glued to the top body of the box.

# Model files



**box-bottom\_v3a.stl**



**title.3mf**



**box-top\_v3a.3mf**



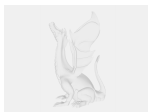
**title.stl**



**title.fcstd**



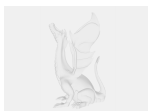
**box-bottom\_v3a.3mf**



**box-bottom\_v3a.fcstd**



**box-top\_v3a.stl**



**box-top\_v3a.fcstd**

# Print files



## box\_top\_bottom\_v3\_015mm\_petg\_mk3\_7h33m.gcode

PET 0.40 mm 0.15 mm 7.55 hrs 80 g Prusa MK3/S/S+

## License



This work is licensed under a  
[Creative Commons \(4.0 International License\)](#)

**Attribution—Noncommercial—Share Alike**

- 
- ✗ | Sharing without ATTRIBUTION
  - ✓ | Remix Culture allowed
  - ✗ | Commercial Use
  - ✗ | Free Cultural Works
  - ✗ | Meets Open Definition