



# Garden Bed Screen

A AntinOz

[VIEW IN BROWSER](#)

updated 12. 4. 2022 | published 8. 2. 2022

## Summary

These brackets are for a garden bed screen I built for our raised vegetable beds. The pipe is 20mm PVC conduit, which...

[Household](#) > [Outdoor & Garden](#)

These brackets are for a garden bed screen I built for our raised vegetable beds. The pipe is 20mm PVC conduit, which has an external diameter of around 22mm. There are fillets on the brackets that I tried to remember to install facing downwards. The bottom of the uprights is sitting inside 25mm conduit with a clip holding them down for easy removal.

## Print Settings

### Printer Brand:

Creality

### Printer:

CR-10S

### Rafts:

No

### Supports:

No

**Resolution:**

0.2

**Infill:**

15%

**Filament:** Progressive 3D PLA blue

**Notes:**

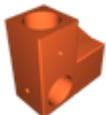
I was not sure how this would stand up outside but the first screen has been up for several months now. I did print with 5 shells for strength

Category: Outdoor & Garden

## Model files



**corner.stl**



**centre.stl**

[Find source .stl files on Thingiverse.com](#)

## License

This work is licensed under a  
[Creative Commons \(4.0 International License\)](#)



**Attribution**

- 
- ✗ | Sharing without ATTRIBUTION
  - ✓ | Remix Culture allowed

- ✓ | Commercial Use
- ✓ | Free Cultural Works
- ✓ | Meets Open Definition