

Lifecam Studio Mount (remix)

 **AntinOz**

[VIEW IN BROWSER](#)

updated 12. 4. 2022 | published 8. 2. 2022

Summary

Very minor remix. I moved the hole about a millimetre closer to the bottom edge as I found the original too tight for...

[3D Printers](#) > [Accessories](#)

Very minor remix. I moved the hole about a millimetre closer to the bottom edge as I found the original too tight for the arm I was using.

Print Settings

Printer Brand:

Creality

Printer:

CR-10S

Rafts:

No

Supports:

No

Resolution:

0.2

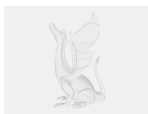
Infill:

20%

Filament: Cocoon PLA Grey

Category: 3D Printer Accessories

Model files



large_display_lifecammount_131442.stl



lifecammount.stl



testmount.3mf

[Find source .stl files on Thingiverse.com](#)

License ©

This work is licensed under a
Creative Commons (4.0 International License)



Attribution

- ✗ | Sharing without ATTRIBUTION
- ✓ | Remix Culture allowed
- ✓ | Commercial Use
- ✓ | Free Cultural Works
- ✓ | Meets Open Definition

