



Another paper towel hanger v2



Heleplanchiste

[VIEW IN BROWSER](#)

updated 8. 2. 2022 | published 8. 2. 2022

Summary

Minimalistic paper towel hanger (Sopalin). Add a double side tape on the side of the plastic hanger.



3.38 hrs



1 pcs



0.20 mm



0.40 mm



PLA



39 g



Prusa
MK3/S/S+

[Household](#) > [Kitchen](#)

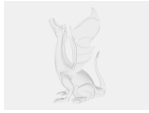
Tags: [papertowel](#) [papertowelholder](#) [papertoweldispenser](#)
[sopalin](#)

Print the big and small part and simply add some double tape on the side then push the papertowel on the small one to the bottom, keep 2cm on the big one and then tape the hanger where you want it.

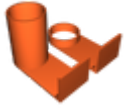
To change the papertowel when it's finish, simply push in the direction of the big piece. The empty roll should detach by itself.

If you print it, and it works for you, please rate it, like it and post a make, that would be highly appreciated!

Model files



sopalinholder-short-v2.f3d



papertowelhanger.3mf



sopalinholder-v2.f3d

Print files



papertowelhanger_02mm_pla_mk3s_3h23m.gcode

🌀 PLA 📏 0.40 mm 📏 0.20 mm ⌚ 3.38 hrs ⚖️ 39 g 🖨️ Prusa MK3/S/S+

License ©

This work is licensed under a
GNU



General Public License v2.0

-
- ✗ | Sharing without ATTRIBUTION
 - ✓ | Remix Culture allowed
 - ✓ | Commercial Use
 - ✓ | Meets Open Definition
 - i | Share under the same license