



Vase Mode Banana Pen

e elxris

[VIEW IN BROWSER](#)

updated 9. 2. 2022 | published 9. 2. 2022

Summary

Banana Pen for BIC-like refills that can be printed in vase mode, a ~45 minute print



0.71 hrs



1 pcs



0.20 mm



0.40 mm



PLA



6 g



Prusa MINI /
MINI+

[Household](#) > [Office](#)

Tags: [pen](#) [vasemode](#) [bic](#) [banana](#)

I designed this model for compatible BIC-like refills. It has a 4.2mm hole.

Step and f3d files provided (first designs, they could be a little messy).

Public domain licence :)

Print Instructions

I have provided a 3mf file for the Prusa Mini+, I get great results with default settings.

~43 minutes with .2mm layer resolution.

You need to enable vase mode.

Bottom layers need to be the equivalent of 3mm of height. For .2 layer height it should be 15 layers. For .1 layer height it would be 29. (First layer is always .2)

That's because the hole need to be printed in "standard mode" and then it will continue as a vase mode print. If you print in other layer resolution than .2 review your g-code before printing as it could close the hole.

I suggest you to enable brim, a 5mm works wonders.

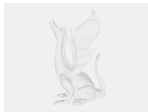
Model files



banana-pen.3mf



banana-pen.stl



banana-pen.f3d



banana-pen.step

Print files



banana-pen_02mm_pla_mini_43m.gcode

PLA 0.40 mm 0.20 mm 0.71 hrs 6 g Prusa MINI / MINI+

License

This work is licensed under a
Creative Commons (International License)



Public Domain

- ✓ | Sharing without ATTRIBUTION
- ✓ | Remix Culture allowed
- ✓ | Commercial Use
- ✓ | Free Cultural Works
- ✓ | Meets Open Definition