



Schmoo Transfer Adaptor for plastic schmoo pump bottles



mscalora

[VIEW IN BROWSER](#)

updated 26. 4. 2023 | published 26. 4. 2023

Summary

Get every drop of schmoo from your bottles that come with pumps by transferring the last drops to the next one



0.65 hrs



1 pcs



0.20 mm



0.40 mm



PLA



6 g



Prusa
MK3/S/S+

[Household](#) > [Other House Equipment](#)

Tags: [bottle](#) [threaded](#) [schmoo](#)

I designed this adaptor so I could transfer the last bit out of pump bottles into the next one. I hate throwing away the product that the pumps won't reach. This one fits most bottles that have a approximately 25 mm neck which is common for products that come with a pump like lotion and hand sanitizer.

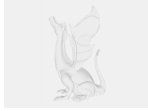
The included Fusion 360 CAD file is highly parameterized so you can adapt it to other sizes.

Prints without support in any material.

Re: <https://avedictionary.com/shmoo-schmoo/>

Update: v3 has grips that match my other transfer adaptor

Model files



schmoo-transfer-adaptor-v2.step



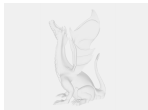
schmoo-transfer-adaptor-v2.f3d



schmoo-transfer-adaptor-v2.3mf



schmoo-transfer-adaptor-v3.3mf



schmoo-transfer-adaptor-v3.step

Print files



schmoo-transfer-adaptor-v3_02mm_pla_mk3s_39m.gcode

PLA 0.40 mm 0.20 mm 0.65 hrs 6 g Prusa MK3/S/S+

License

This work is licensed under a
Creative Commons (4.0 International License)



Attribution

- ✗ | Sharing without ATTRIBUTION
- ✓ | Remix Culture allowed
- ✓ | Commercial Use
- ✓ | Free Cultural Works
- ✓ | Meets Open Definition