

e3D V6 Mount for Creality CR-10 MAX



Werkstätte Watten FabLab

[VIEW IN BROWSER](#)

updated 9. 2. 2022 | published 9. 2. 2022

Summary

e3D V6 Mount for Creality CR-10 MAX as an upgrade for the stock hotend

[3D Printers](#) > [3D Printers - Upgrades](#)

Tags: [mount](#) [hotend](#) [fan](#) [e3dv6](#)

If you are just as unhappy with your stock CR-10 Hotend here's a solution for you.

We designed a Mount to fix the genuine e3D V6 (<https://e3d-online.com/products/v6-all-metal-hotend>) to our Creality.

All you need are 2pcs M3x12 Screw and 2pcs M3 nuts the rest of the original screws can be reused.

We printed the mount in PETG and the Cover in PLA.

Make sure to reposition the BI-Touch if you use one to fit the a bit higher hotend and recalibrate your Z-Offset via the Touch Display.

Have Fun,
Florian

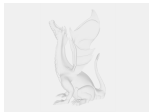
Model files



v6-hotend-mount_v3_ab.3mf



v6-hotend-mount_v3_cover.3mf



v6-hotend-mount_v3_a.stp



v6-hotend-mount_v3_b.stp



v6-hotend-mount_v3_cover.stp

License



This work is licensed under a
Creative Commons (4.0 International License)

Attribution-ShareAlike

-
- ✗ | Sharing without ATTRIBUTION
 - ✓ | Remix Culture allowed
 - ✓ | Commercial Use
 - ✓ | Free Cultural Works
 - ✓ | Meets Open Definition