



## Pickled Deer (a.k.a. The Dill-Doe)



Zach

[VIEW IN BROWSER](#)

updated 12. 4. 2022 | published 2. 12. 2019

### Summary

Inspired by a post on reddit that did not link an STL, I decided to make this as a gag prize for a contest at work.



5.94 hrs



2 pcs



0.20 mm  
0.10 mm



0.40 mm



PLA



138 g



Prusa  
MK3/S/S+

[Art & Design](#) > [Other Art & Designs](#)

Tags: [deer](#) [joke](#) [pickle](#)

Inspired by a post on reddit that did not link an STL, I decided to make this as a gag prize for a contest at work. Thank you to photoholic and aled96 for the source models, sorry to defame them in this way :)

For easy printing, rotate sideways and split down the middle to print two halves separate...or use the uploaded 3MF that has that done already.

### Print instructions Category: 3D Printing Print Settings

**Printer Brand:** Prusa

**Printer:** I3 MK3S

**Rafts:** No

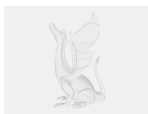
**Supports:** Yes

**Resolution:** 0.1mm or 0.2mm

**Infill:** 10%

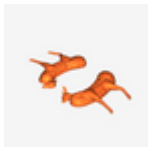
**Filament:** CC3D PLA Gold

## Model files



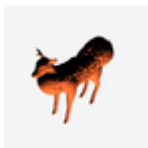
**large\_display\_pickle\_deer\_13157.stl**

---



**pickle\_deer.3mf**

---



**pickle\_deer.stl**

## Print files



**pickle-deer\_02mm\_pla.gcode**

🌀 PLA 🌀 0.40 mm ≡ 0.20 mm ⌚ 2.27 hrs ⚖️ 69 g 🖨️ Prusa MK3/S/S+

---



**pickle-deer\_01mm\_pla.gcode**

🌀 PLA 🌀 0.40 mm ≡ 0.10 mm ⌚ 3.67 hrs ⚖️ 69 g 🖨️ Prusa MK3/S/S+

[Find source .stl files on Thingiverse.com](#)

# License

This work is licensed under a  
**Creative Commons (4.0 International License)**



**Attribution—Noncommercial—Share Alike**

---

- ✗ | Sharing without ATTRIBUTION
- ✓ | Remix Culture allowed
- ✗ | Commercial Use
- ✗ | Free Cultural Works
- ✗ | Meets Open Definition