

Grow Lamp Mount



xythobuz

[VIEW IN BROWSER](#)

updated 12. 4. 2022 | published 9. 2. 2022

Summary

Simple mounting solutions to hang cheap chinese purple grow LED panels from hooks on the ceiling. Needs the following...

[Hobby & Makers](#) > [Other Ideas](#)

Simple mounting solutions to hang cheap chinese purple grow LED panels from hooks on the ceiling. Needs the following mounting hardware:

- 4x M4x10 screw
- 1x M4x20 screw
- 5x M4 nut
- 2x M4 washer (optional)

Assembly should be self-explanatory.

Print Settings

Printer:

CTC i3 Pro B

Rafts:

No

Supports:

No

Resolution:

0.2

Infill:

20%

Filament:

Giantarm PETG

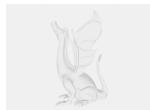
Green

Notes:

Any material does the trick.

Category: Parts

Model files



lamp_mount.scad



lamp_mount.stl

[Find source .stl files on Thingiverse.com](#)

License

This work is licensed under a
Creative Commons (4.0 International License)



Attribution-ShareAlike

- ✘ | Sharing without ATTRIBUTION
- ✓ | Remix Culture allowed
- ✓ | Commercial Use
- ✓ | Free Cultural Works
- ✓ | Meets Open Definition