

Prusa i3 front camera mount



xythobuz

[VIEW IN BROWSER](#)

updated 12. 4. 2022 | published 9. 2. 2022

Summary

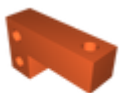
This is my simple front camera mount, made to fit the original Prusa i3 Y-Axis design. I'm using it with an Orange Pi...

[3D Printers](#) > [Accessories](#)

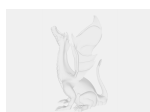
This is my simple front camera mount, made to fit the original Prusa i3 Y-Axis design. I'm using it with an Orange Pi PC Plus camera, the matching mount [can be found here](#).

Category: 3D Printer Accessories

Model files



cam-holder-bottom.stl



cam-holder.scad



cam-holder-top.stl

[Find source .stl files on Thingiverse.com](#)

License ©

This work is licensed under a
Creative Commons (4.0 International License)



Attribution—Noncommercial—Share Alike

- ✗ | Sharing without ATTRIBUTION
- ✓ | Remix Culture allowed
- ✗ | Commercial Use
- ✗ | Free Cultural Works
- ✗ | Meets Open Definition