

Y-Axis Fan Holder for Fabrikator Mini V1.5



xythobuz

[VIEW IN BROWSER](#)

updated 12. 4. 2022 | published 9. 2. 2022

Summary

I've redrawn the original design in OpenSCAD and modified it to work with 25mm fans. Then I've noticed that it won't...

[3D Printers](#) > [Accessories](#)

Tags: [customizer](#)

I've redrawn the original design in OpenSCAD and modified it to work with 25mm fans. Then I've noticed that it won't even fit the newer Fabrikator Mini V1.5, as there's a new 10mm high bracket directly on the left of the Y-axis stepper motor.

This design is parameterized to optionally disable the new gap to provide a smaller bracket for old V1.0 printers.

Update: (2016-04-02)

The very small arms on the left side in my recreation caused some stability issues after the PLA got some heat from the motor. So I've redesigned this thing again and added a lot more parameters. The wall size has been increased, and most free space is used. The bracket now fits the motor very tightly, but the hot-end is still unobstructed.

Update: (2016-04-05)

Slightly tweaked some parameters and added a slight inward angle for the left arm. This should make the bracket even more stable.

Update: (2016-04-17)

I'm still not quite satisfied with this solution. My X-axis stepper has got some heatsinks and is noticeably cooler than the other motors. So I've tweaked the design yet again and added a big cut out in the front to allow a 24mm heat sink to be put on the motor. I've also added another small cut-out on the right arm to allow for another bracket I didn't notice before. I've also made the right wall slightly thinner, so the hot-end always fits without any friction besides the bracket. The STL without a cut-out is still included. Also, this part won't work properly with the Customizer anymore...

For the full editing history get this thing from [my Git Repository](#).

Update: (2016-04-29)

Slightly tweaked parameters.

Update: (2016-05-31)

Slightly tweaked parameters again.

Print Settings

Printer:

Fabrikator Mini

Rafts:

No

Supports:

Yes

Resolution:

0.2mm

Infill:

20%

Notes:

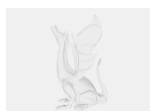
You need to print supports Everywhere, not only when touching the print bed!

Category: 3D Printer Accessories

Model files



fan_holder_heatsink.stl



fan_holder.scad

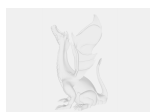


fan_holder_small.stl



fan_holder.stl

Other files



sources.txt

[Find source .stl files on Thingiverse.com](https://www.thingiverse.com)

License ©

This work is licensed under a
[Creative Commons \(4.0 International License\)](https://creativecommons.org/licenses/by/4.0/)



Attribution

- ✘ | Sharing without ATTRIBUTION
- ✓ | Remix Culture allowed
- ✓ | Commercial Use
- ✓ | Free Cultural Works
- ✓ | Meets Open Definition