



Ho! 2

t timcel

[VIEW IN BROWSER](#)

updated 12. 4. 2022 | published 3. 12. 2019

Summary

Ho! 2 is a member of the 2019 Holiday Collection.

[Seasonal designs](#) > [Winter & Christmas & New Year's](#)

Tags: [christmas](#) [xmas](#) [christmasdecoration](#)
[christmasdecorations](#) [xmasdecorations](#)

Ho! 2 is a member of the 2019 Holiday Collection. At the bottom of this summary, you'll find a list of all the members of the collection.

Ho! 2 prints great in one color. Two sizes are included. Choosing Holiday colors is always right. Something light and bright would be fun.

The samples shown were printed with Atomic Filament's spectacular Pearlescent Red. It's flat in color and wonderful. The other samples were printed in Silky Red and Silky Green PLA filaments.

The 2019 Holiday Collection is all here at the Prusa community for download. Here're the links for the file locations at Thingiverse:

Full set <https://www.thingiverse.com/timcel/collections/2019-holiday-collection>

2019 Holiday Tree <https://www.thingiverse.com/thing:4014140>

Merry Merry <https://www.thingiverse.com/thing:4014387>

Joy Round <https://www.thingiverse.com/thing:4014449>

KissMas <https://www.thingiverse.com/thing:4014356>

Humbug 2 <https://www.thingiverse.com/thing:4014281>

Ho!Ho!Ho! 2 <https://www.thingiverse.com/thing:4014267>

Ho! 2 <https://www.thingiverse.com/thing:4014250>

Ho! 3 <https://www.thingiverse.com/thing:4014217>

Xmas Star <https://www.thingiverse.com/thing:4014412>

Other collections...

2018 Holiday Collection

<https://www.thingiverse.com/timcel/collections/2018-holiday-design-collection>

Boo!Ville Collection

<https://www.thingiverse.com/timcel/collections/boo-ville>

2019 Valentine Collection

<https://www.thingiverse.com/timcel/collections/2019-valentine-collection>

Good Words

<https://www.thingiverse.com/timcel/collections/good-words>

The Joy Project

<https://www.thingiverse.com/thing:3298739>

Other Collections

<https://www.thingiverse.com/timcel/collections>

To see what else I'm making using digital tools follow me on Instagram:

@celeski.digital and @woodworking.digital

Print instructions Category: Decor Print Settings

Printer Brand: Prusa

Printer: I3 MK3S

Rafts: No

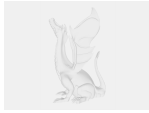
Supports: No

Resolution: .15mm to .20mm

Infill: 15-20%

Filament: Atomic Filament PLA Silky Red, Silky Aqua

Model files



large_display_ho7a_13172.stl



large_display_ho7b_13172.stl



ho7b.stl



ho7a.stl

[Find source .stl files on Thingiverse.com](#)

License ©

This work is licensed under a
Creative Commons (4.0 International License)



Attribution—Noncommercial—Share Alike

- ✗ | Sharing without ATTRIBUTION
- ✓ | Remix Culture allowed
- ✗ | Commercial Use
- ✗ | Free Cultural Works
- ✗ | Meets Open Definition