



KissMas

t timcel

[VIEW IN BROWSER](#)

updated 12. 4. 2022 | published 3. 12. 2019

Summary

KissMas is a member of the 2019 Holiday Collection.

[Seasonal designs](#) > [Winter & Christmas & New Year's](#)

Tags: [christmas](#) [love](#) [xmas](#) [kiss](#) [christmasdecoration](#)
[christmasdecorations](#) [xmasdecorations](#) [xmasdecoration](#)

KissMas is a member of the 2019 Holiday Collection. At the bottom of this summary, you'll find a list of all the members of the collection.

Kissmas is a special edition of KissKiss from my 2019 Valentine Collection. Additional "words" will be added soon.

KissMas prints great in one color. For two color, see the print information below. Two sizes are included. The smaller size is just right for just two Hershey's Kisses. The larger is printed at 200% is big enough for serving a group.

Choosing Holiday colors is always right. Something light and bright would be fun.

The two color samples shown were printed in Silky Red and Green PLA filaments. One color versions were printed in Silky PLA green and PETG

Red. If you have a Prusa MMU then make a filament changes on the lid at 8mm.

The 2019 Holiday Collection is all here at the Prusa community for download. Here are the links for the file locations at Thingiverse:

Full set <https://www.thingiverse.com/timcel/collections/2019-holiday-collection>

2019 Holiday Tree <https://www.thingiverse.com/thing:4014140>

Merry Merry <https://www.thingiverse.com/thing:4014387>

Joy Round <https://www.thingiverse.com/thing:4014449>

KissMas <https://www.thingiverse.com/thing:4014356>

Humbug 2 <https://www.thingiverse.com/thing:4014281>

Ho!Ho!Ho! 2 <https://www.thingiverse.com/thing:4014267>

Ho! 2 <https://www.thingiverse.com/thing:4014250>

Ho! 3 <https://www.thingiverse.com/thing:4014217>

Xmas Star <https://www.thingiverse.com/thing:4014412>

Other collections...

2018 Holiday Collection

<https://www.thingiverse.com/timcel/collections/2018-holiday-design-collection>

Boo!Ville Collection

<https://www.thingiverse.com/timcel/collections/boo-ville>

2019 Valentine Collection

<https://www.thingiverse.com/timcel/collections/2019-valentine-collection>

Good Words

<https://www.thingiverse.com/timcel/collections/good-words>

The Joy Project

<https://www.thingiverse.com/thing:3298739>

Other Collections

<https://www.thingiverse.com/timcel/collections>

To see what else I'm making using digital tools follow me on Instagram:
@celeski.digital and @woodworking.digital

Print instructions Category: Decor Print Settings

Printer Brand: Prusa

Printer: i3 MK3 MMU 2

Rafts: No

Supports: No

Resolution: .15mm to .20mm

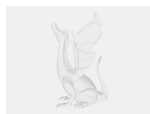
Infill: 15-20%

Filament: Silky PLAs PLA Red, Green, White, Silver

Notes:

I printed some of the samples in 2 colors. Most recent 3D printers allow you to pause to change filaments in the middle of a print. For this print watch as the top is completed and the letters start to print. Change filaments and complete the print.

Model files



large_display_kisskisscontainerbottom_13176.stl



kisskisscontainerbottom.stl



kisskisscontainertop.stl

[Find source .stl files on Thingiverse.com](#)

License ©

This work is licensed under a
Creative Commons (4.0 International License)



Attribution-NonCommercial

- ✗ | Sharing without ATTRIBUTION
- ✓ | Remix Culture allowed
- ✗ | Commercial Use
- ✗ | Free Cultural Works
- ✗ | Meets Open Definition

