



## Vase Debossed with Sprout Pattern



sylviatrilling

[VIEW IN BROWSER](#)

updated 9. 2. 2022 | published 9. 2. 2022

### Summary

Vase Debossed with Sprout Pattern



13.78 hrs



1 pcs



0.15 mm



0.40 mm



PLA



119 g

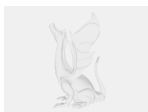


Prusa  
MK3/S/S+

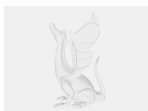
[Household](#) > [Home Decor](#)

I designed this vase with channels where I could put molding paste or other mixed media mediums. It worked best with Deco-art Metallic Lustre Wax. It also looks nice as a deboss surface with nothing added.

### Model files



**sproutvase.stl**



**sproutvase.3mf**

# Print files



## sproutvase.gcode

PLA 0.40 mm 0.15 mm 13.78 hrs 119 g Prusa MK3/S/S+

## License

This work is licensed under a  
[Creative Commons \(4.0 International License\)](#)



**Attribution—Noncommercial—No Derivatives**

- 
- ✗ | Sharing without ATTRIBUTION
  - ✗ | Remix Culture allowed
  - ✗ | Commercial Use
  - ✗ | Free Cultural Works
  - ✗ | Meets Open Definition