

## Storage Box, 4.0x3.0x1.5in



Guido666

[VIEW IN BROWSER](#)

updated 12. 4. 2022 | published 10. 2. 2022

### Summary

A small storage box, with a window. I use it to keep some flat Christmas ornaments in. I designed this to look like...



11.28 hrs



1 pcs



0.20 mm



0.40 mm



PET



104 g



Prusa  
MK3/S/S+

[Household](#) > [Other House Equipment](#)

Tags: [box](#) [storage](#) [storagebox](#)

A small storage box, with a window. I use it to keep some flat Christmas ornaments in.

I designed this to look like the great example in this Filament Sample box (though mine does not actually use any of the original files from it):

<https://www.prusaprinters.org/prints/16322-filament-sample-with-box>

### Print Settings

#### Printer Brand:

Prusa

**Printer:**

I3 MK3S

**Rafts:**

No

**Supports:**

No

**Resolution:**

0.3mm

**Infill:**

90%

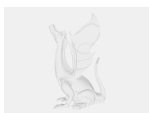
**Filament:** eSun PETG

**Notes:**

This is designed to be printed "solid" (90% infill) for strength.

Category: Containers

## Model files



**ptw-93-1-pt-0658\_box\_40x30x15in.sldprt**



**ptw-93-1-pt-0658\_box\_40x30x15in\_-\_top\_r2\_14feb202.stl**



**ptw-93-1-pt-0658\_box\_40x30x15in\_-\_bottom\_r1\_20jan.stl**

# Print files



**ptw-93-1-pt-0658\_box\_40x30x15in\_17jan2021\_02mm\_.gcode**

PET 0.40 mm 0.20 mm 11.28 hrs 104 g Prusa MK3/S/S+

[Find source .stl files on Thingiverse.com](#)

## License

This work is licensed under a  
**Creative Commons (4.0 International License)**



### Attribution

- 
- ✗ | Sharing without ATTRIBUTION
  - ✓ | Remix Culture allowed
  - ✓ | Commercial Use
  - ✓ | Free Cultural Works
  - ✓ | Meets Open Definition