



2019 Holiday Tree

t timcel

[VIEW IN BROWSER](#)

updated 12. 4. 2022 | published 3. 12. 2019

Summary

Ho!Ho!Ho! Tree is a member of the 2019 Holiday Collection.

[Seasonal designs](#) > [Winter & Christmas & New Year's](#)

Tags: [christmas](#) [xmas](#) [christmasdecoration](#)
[christmasdecorations](#) [holiday](#) [holidaydecoration](#)
[xmasdecorations](#) [xmasdecoration](#)

Ho!Ho!Ho! Tree is a member of the 2019 Holiday Collection. At the bottom of this summary, you'll find a list of all the members of the collection.

Ho!Ho!Ho! Tree prints great in one color. Two sizes are included. Choosing Holiday colors is always right. Something light and bright would be fun. But, you can also make the Ho!Ho!Ho! Tree in two colors or three colors on any 3D printer. How? Two color and three color versions with separate components meant to be glued together are included. Print out the tree in one color, print out the star in a second color. For the three color, print out the 3 color base, tree and star.

To assemble the two or three color Ho!Ho!Ho! Tree. Use CA (Super Glue) to glue the parts together.

The two color samples shown were printed with FilamentOne's beautiful Glint Green and Glint Red. The three color tree was printed in Silky Red, Silky Gold and Silky Green PLA filaments. One color version was printed in standard PLA red.

The 2019 Holiday Collection

Full set <https://www.thingiverse.com/timcel/collections/2019-holiday-collection>

2019 Holiday Tree <https://www.thingiverse.com/thing:4014140>

Merry Merry <https://www.thingiverse.com/thing:4014387>

Joy Round <https://www.thingiverse.com/thing:4014449>

KissMas <https://www.thingiverse.com/thing:4014356>

Humbug 2 <https://www.thingiverse.com/thing:4014281>

Ho!Ho!Ho! 2 <https://www.thingiverse.com/thing:4014267>

Ho! 2 <https://www.thingiverse.com/thing:4014250>

Ho! 3 <https://www.thingiverse.com/thing:4014217>

Xmas Star <https://www.thingiverse.com/thing:4014412>

Other collections...

2018 Holiday Collection

<https://www.thingiverse.com/timcel/collections/2018-holiday-design-collection>

Boo!Ville Collection

<https://www.thingiverse.com/timcel/collections/boo-ville>

2019 Valentine Collection

<https://www.thingiverse.com/timcel/collections/2019-valentine-collection>

Good Words

<https://www.thingiverse.com/timcel/collections/good-words>

The Joy Project

<https://www.thingiverse.com/thing:3298739>

Other Collections

<https://www.thingiverse.com/timcel/collections>

To see what else I'm making using digital tools follow me on Instagram:
[@celeski.digital](#) and [@woodworking.digital](#)

Print instructions Category: Decor Print Settings

Printer Brand: Prusa

Printer: I3 MK3S

Rafts: No

Supports: No

Resolution: .20

Infill: 15-20%

Filament: FilamentOne PLA Xmas Colors

Notes:

2 color and 3 color versions are included. Print each part out and glue together with CA glue

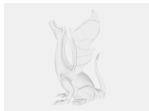
Model files



large_display_hohotreegreen_13181.stl



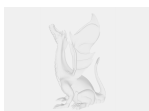
large_display_hohotree3ctop_13181.stl



large_display_hohotreeea_13181.stl



large_display_hohotree3ctree_13181.stl



large_display_hohotree3cbase_13181.stl



hohotree3ctree.stl



hohotreeb.stl



hohotreegreen.stl



hohotree3cbase.stl



hohotreea.stl



hohotreered.stl



hohotree3ctop.stl

[Find source .stl files on Thingiverse.com](#)

License ©



This work is licensed under a
Creative Commons (4.0 International License)

Attribution—Noncommercial—Share Alike

- ✗ | Sharing without ATTRIBUTION
- ✓ | Remix Culture allowed
- ✗ | Commercial Use
- ✗ | Free Cultural Works
- ✗ | Meets Open Definition