



Dust Collector / Vacuum Manifold / Selector

 dkridr

[VIEW IN BROWSER](#)

updated 12. 4. 2022 | published 10. 2. 2022

Summary

This is a set of workbench-mounted adapters that allows the easy selection of the hose which is connected to my shop...

[Hobby & Makers](#) > [Tools](#)

Tags: [vacuum](#) [vacuumadapter](#) [dustcollector](#) [vacuumhose](#)

This is a set of workbench-mounted adapters that allows the easy selection of the hose which is connected to my shop vacuum. There are two adapters: one that connects to a 2 1/2" hose and another that connects to a 1 1/2" hose. The intake is selected using a nozzle that connects to end of a 1 1/2" hose which is, in turn, connected to my wall-mounted vacuum: <https://amzn.to/2KWFik0>

The 2 1/2" hose I used is <https://amzn.to/2NBt8fc>

Inspired in part by this: <http://tinyurl.com/yd2n86gf>

Category: Tools

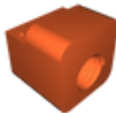
Model files



hosemount_large.stl



hose_selector.f3d



hosemount_small.stl



hoseconnector.stl

[Find source .stl files on Thingiverse.com](https://www.thingiverse.com)

License ©



This work is licensed under a
Creative Commons (4.0 International License)

Attribution

- ✗ | Sharing without ATTRIBUTION
- ✓ | Remix Culture allowed
- ✓ | Commercial Use
- ✓ | Free Cultural Works
- ✓ | Meets Open Definition