



# Protoneer Raspberry Pi CNC 2.60 Case

d dkridr

VIEW IN BROWSER

updated 12. 4. 2022 | published 10. 2. 2022

## Summary

This is a remix of the Protoneer Raspberry Pi CNC Case designed by Elbarfo which is itself a remix of janbvik's...

[Hobby & Makers](#) > [Other Ideas](#)

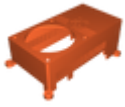
Tags: [cnc](#) [raspberrypi](#) [raspberrypicase](#) [protoneer](#)

This is a remix of the Protoneer Raspberry Pi CNC Case designed by Elbarfo which is itself a remix of janbvik's design. I recreated the original design, with some modifications, in Fusion 360 so I could accommodate the latest version of the Protoneer board and modify the case to work in my setup. The four external screw mounting holes in the bottom section require threaded inserts for M3 screws, like those found here: <http://a.co/8G06djQ>

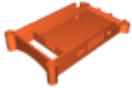
I relied on the CAD model for the 2.60 board found here: <https://grabcad.com/library/protoneer-rpi-cnc-hat-v2-60-1> and on the model for the Raspberry Pi board here: <https://grabcad.com/library/raspberry-pi-3-model-b-reference-design-solidworks-cad-raspberry-pi-raspberrypi-rpi-1>

Category: DIY

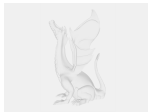
## Model files



protoneer\_rpi-cnc\_hat\_top.stl



protoneer\_rpi-cnc\_hat\_bottom.stl



raspberry\_pi\_3\_case\_v9.f3d

## Other files



sources.txt

[Find source .stl files on Thingiverse.com](#)

## License ©

This work is licensed under a  
**Creative Commons (4.0 International License)**



### Attribution

- 
- ✗ | Sharing without ATTRIBUTION
  - ✓ | Remix Culture allowed
  - ✓ | Commercial Use
  - ✓ | Free Cultural Works
  - ✓ | Meets Open Definition

