

Shapeoko 3 Vacuum Hose Mount

d dkridr

[VIEW IN BROWSER](#)

updated 12. 4. 2022 | published 10. 2. 2022

Summary

This is a cradle for a 2 1/2" dust hose which allows it to be mounted above the router.

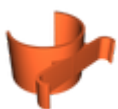
[Hobby & Makers](#) > [Other Ideas](#)

Tags: [cnc](#) [shapeoko](#) [dustcollector](#) [shapeoko3](#)

This is a cradle for a 2 1/2" dust hose which allows it to be mounted above the router.

Category: Parts

Model files



hosecradle.stl



hose_cradle_v4.f3d

[Find source .stl files on Thingiverse.com](#)

License

This work is licensed under a
Creative Commons (4.0 International License)



Attribution

-
- ✗ | Sharing without ATTRIBUTION
 - ✓ | Remix Culture allowed
 - ✓ | Commercial Use
 - ✓ | Free Cultural Works
 - ✓ | Meets Open Definition