



Ring Doorbell Angle Wedge With Tilt

 dkrider

[VIEW IN BROWSER](#)

updated 12. 4. 2022 | published 10. 2. 2022

Summary

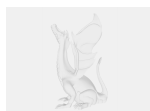
This is a modified version of Ring Doorbell Angle Wedge. It has a slight vertical tilt so that it can be mounted to...

[Household](#) > [Other House Equipment](#)

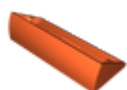
This is a modified version of Ring Doorbell Angle Wedge. It has a slight vertical tilt so that it can be mounted to shingles.

Category: Household

Model files

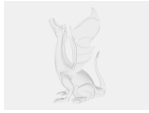


ring_doorbell_angle_bracket_v3_v2.f3d



ring_doorbell_angle_bracket_v3_v2.stl

Other files



sources.txt

[Find source .stl files on Thingiverse.com](#)

License

This work is licensed under a
Creative Commons (4.0 International License)



Attribution

- ✗ | Sharing without ATTRIBUTION
- ✓ | Remix Culture allowed
- ✓ | Commercial Use
- ✓ | Free Cultural Works
- ✓ | Meets Open Definition