



Cherish Ball Nintendo Switch Game Holder



Gosga365

[VIEW IN BROWSER](#)

updated 21. 4. 2021 | published 24. 4. 2019

Summary

A Nintendo Switch game cart holder. Designed for all the colored parts to be printed separately.

[Gadgets](#) > [Video Games](#)

Tags: [organizer](#) [pokemon](#) [nintendo](#) [switch](#) [pokeball](#)
[cherishball](#) [cherish](#)

A Nintendo Switch game cart holder. Designed for all the colored parts to be printed separately. If anyone wants to give it a shot in the MMU2, let me know and I can revise the files to align properly for that.

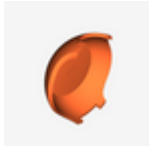
Print instructions

Print the with the keyring sticking out parallel to the buildplate. You will need to hit the part with a mallet or something similar to get the hinge to pivot after it prints.

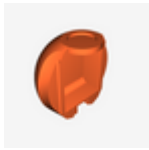
Model files



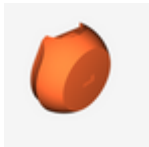
cherishball_-_cherishball-sidestripe-1.stl



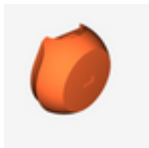
cherishball_-_cherishball-toplid-1.stl



cherishball_-_cherishball-midtop-1.stl



cherishball-midbtm-switchgames.stl



cherishball-midbtm-dsgames.stl



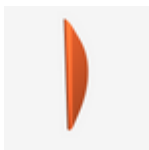
minicollectionbox_corejoint.stl



cherishball_-_cherishball-button-1.stl



cherishball_-_cherishball-buttonring-1.stl



cherishball_-_cherishball-sidestripe-2.stl



cherishball-bottomlid-v2.stl

[Find source .stl files on Thingiverse.com](#)

License ©

This work is licensed under a
Creative Commons (4.0 International License)



Attribution

- ✗ | Sharing without ATTRIBUTION
- ✓ | Remix Culture allowed
- ✓ | Commercial Use
- ✓ | Free Cultural Works
- ✓ | Meets Open Definition